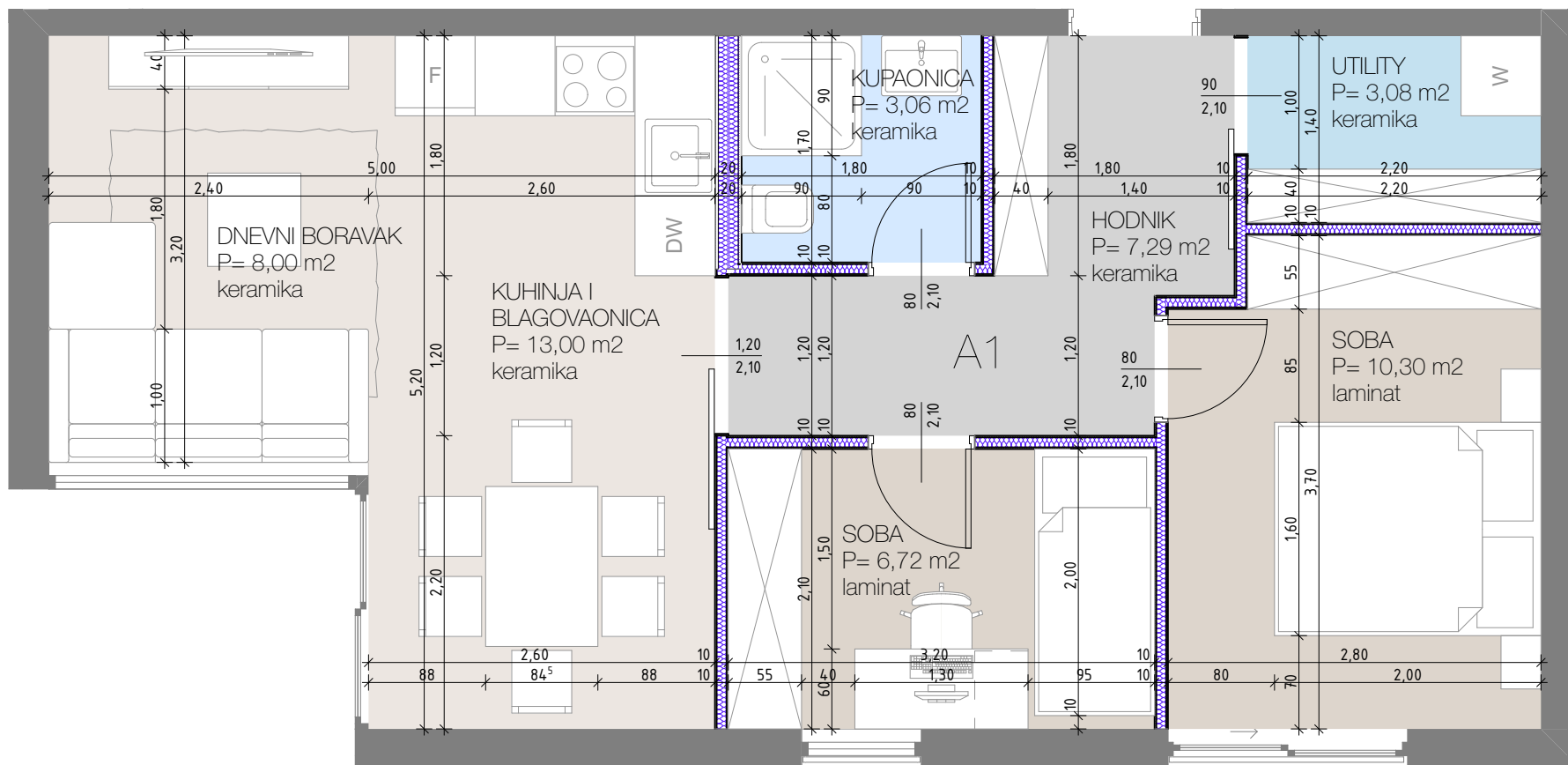


Gradimo vaš budući DOM!
Obratite nam se s povjerenjem

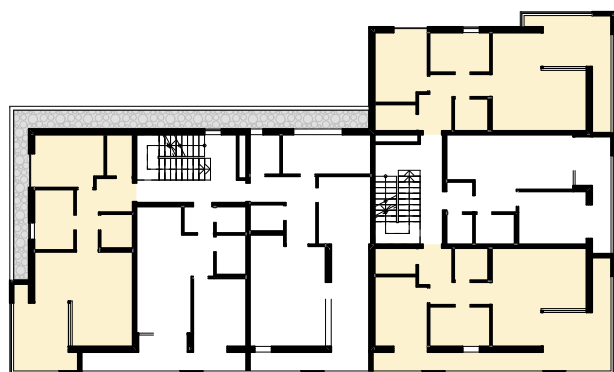
BLOK | ŠTACJON **1.**

DE CONTE

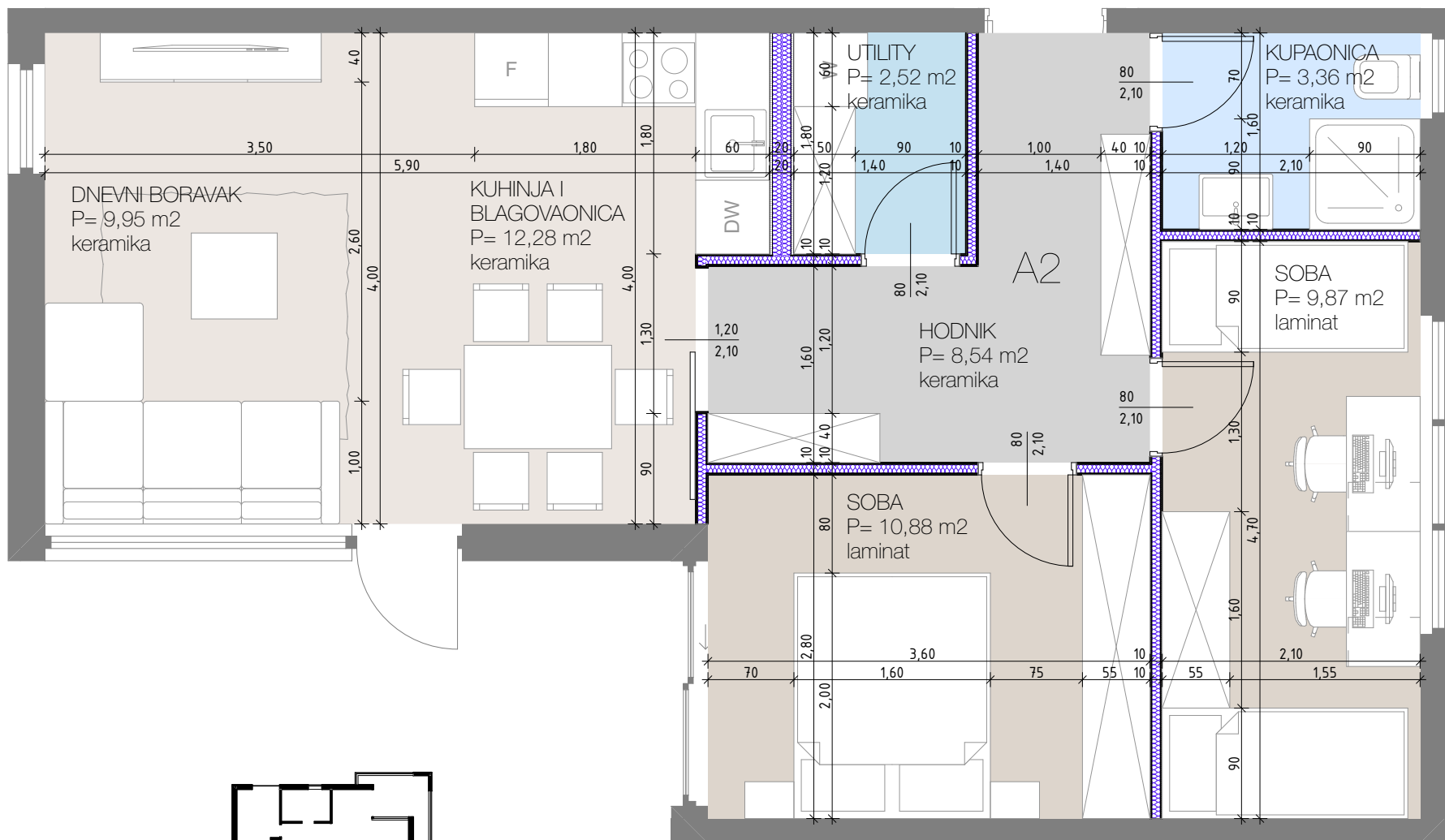
091 1255 006, www.deconte.hr



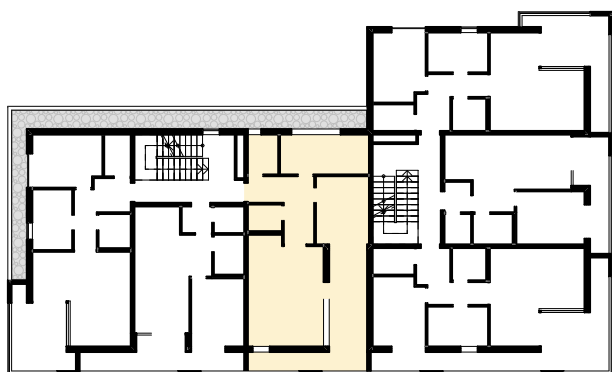
M1:50



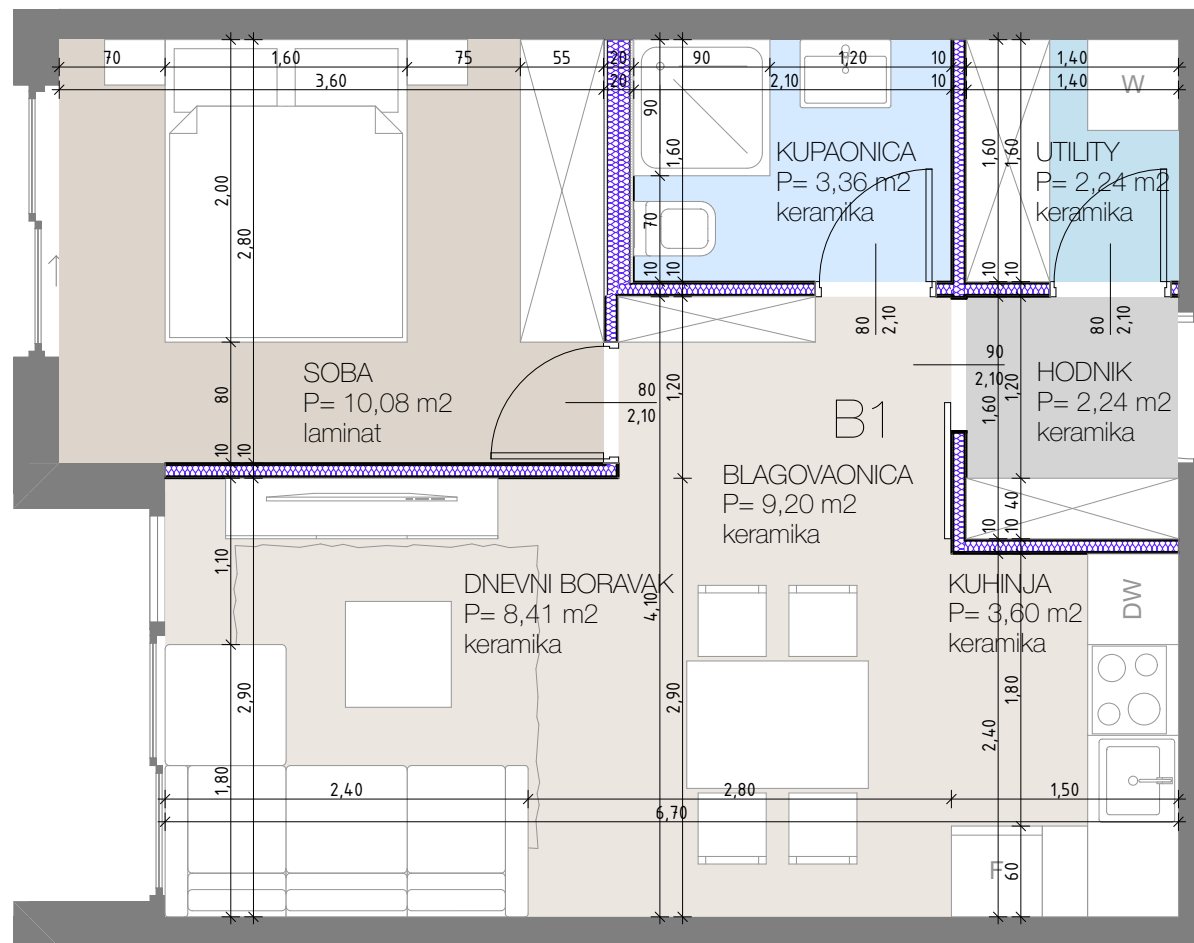
Stanovi tip A1 površina (bez terasa) = 51,45m²



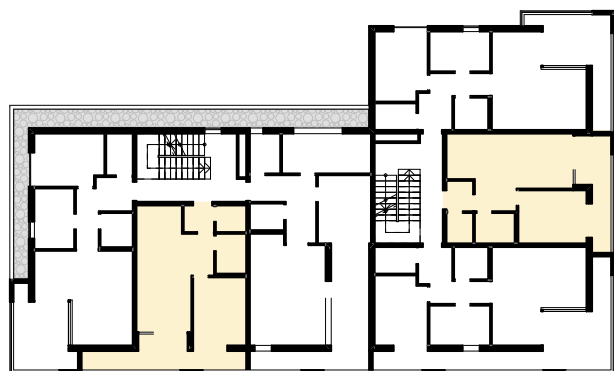
M1:50



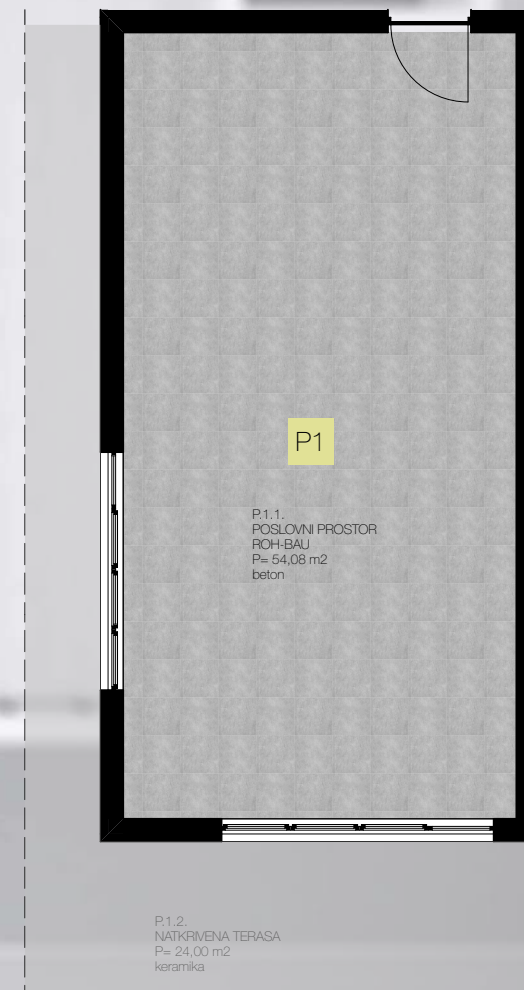
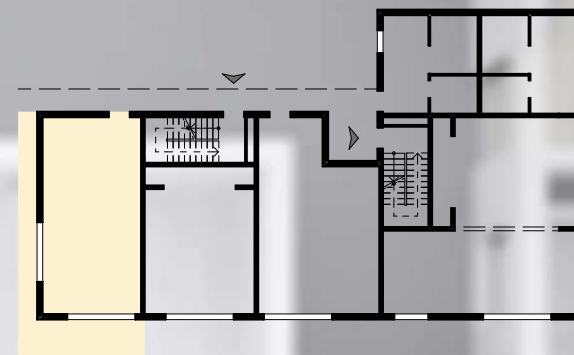
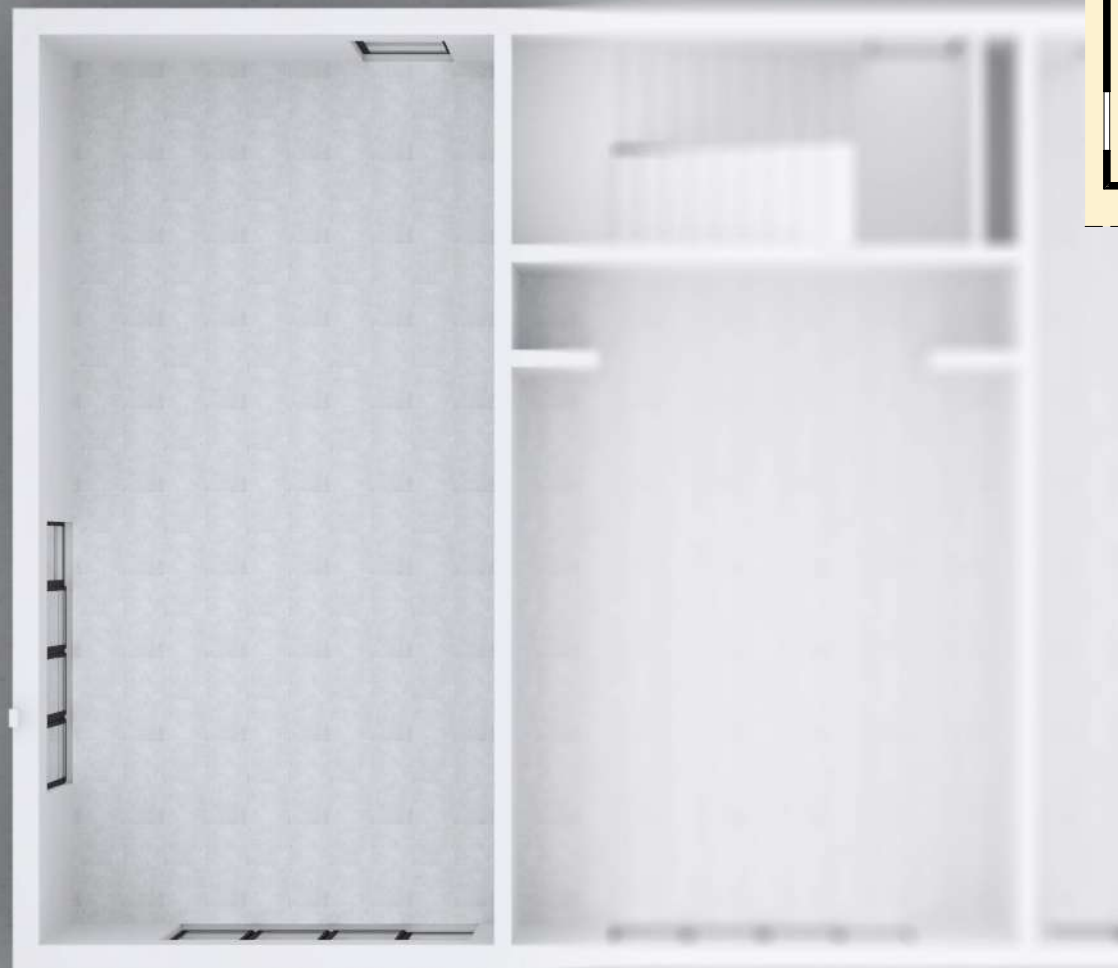
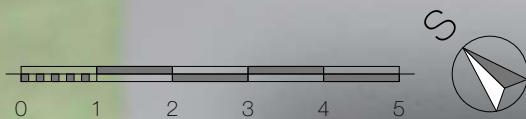
Stanovi tip A2 površina (bez terasa) = 57,40m²



M1:50



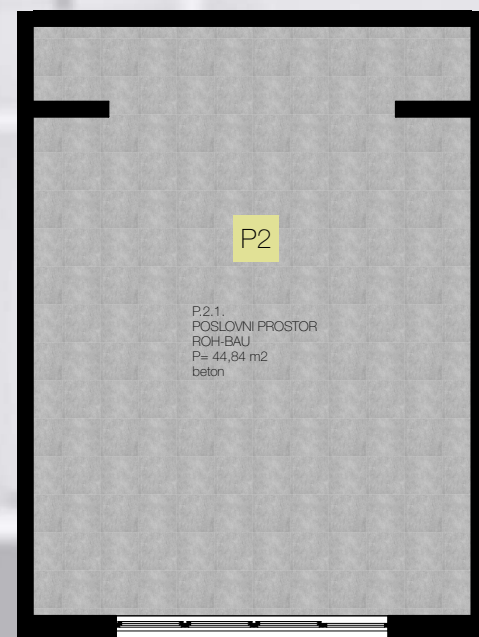
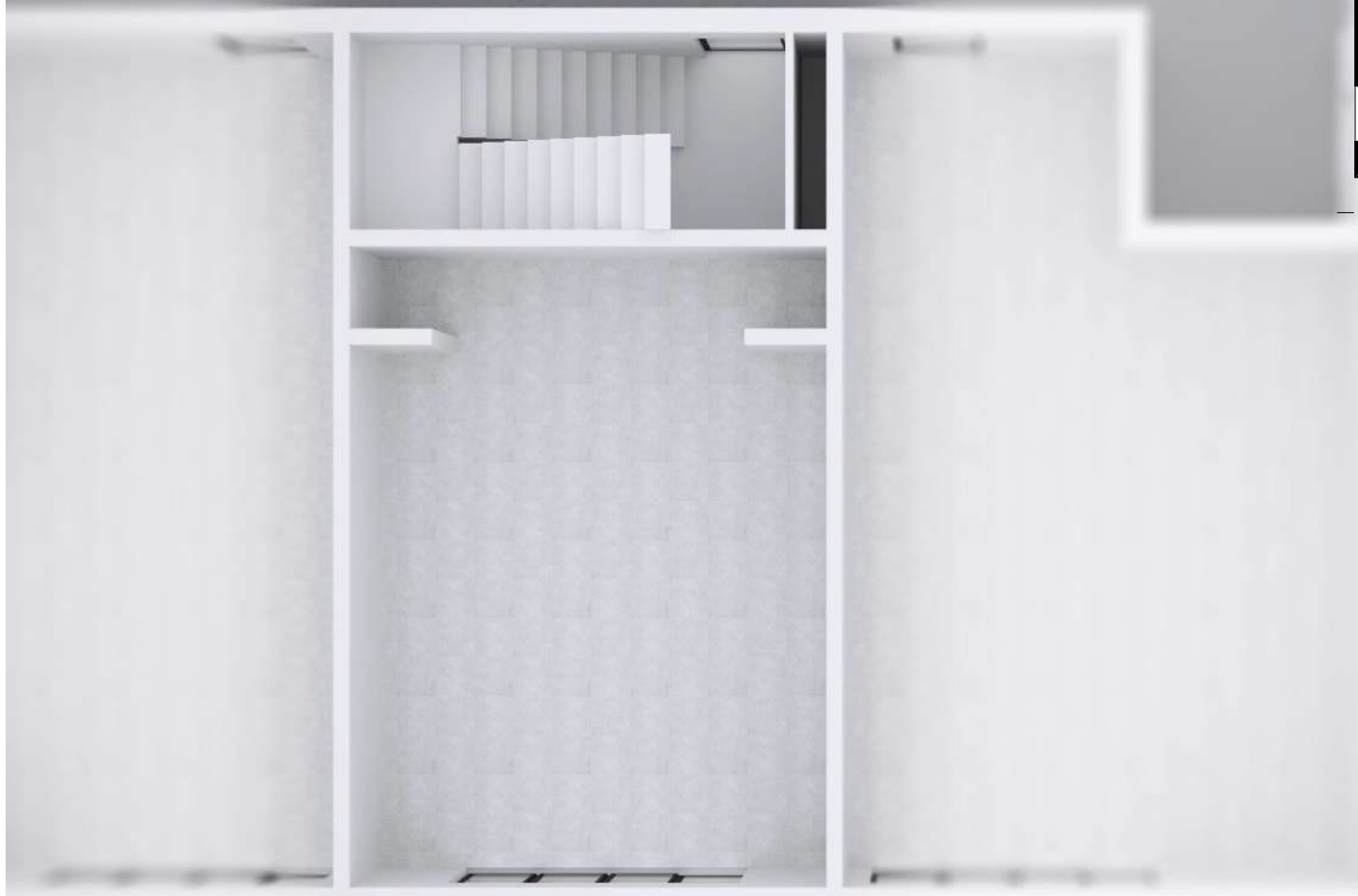
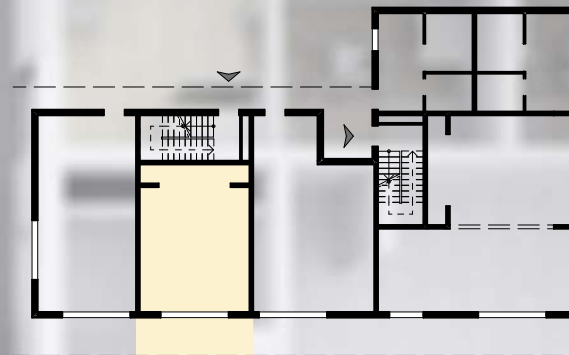
Stanovi tip B1 površina (bez terasa) = 39,13m²



P.1.1. POSLOVNI PROSTOR - ROH-BAU 54,08 m² beton
P.1.2. NATKRIVENA TERASA 24,00x0,50 keramika
= 12,00 m²

POSLOVNI PROSTOR P1 66,08 m²

M1:100



P.2.1. POSLOVNI PROSTOR - ROH-BAU	44,84 m ²	beton
P.2.2. NATKRIVENA TERASA	12,00x0,50	keramika
	= 6,00 m ²	

POSLOVNI PROSTOR P2	50,84 m ²
---------------------	----------------------

P.2.2.
NATKRIVENA TERASA
P= 12,00 m²
keramika

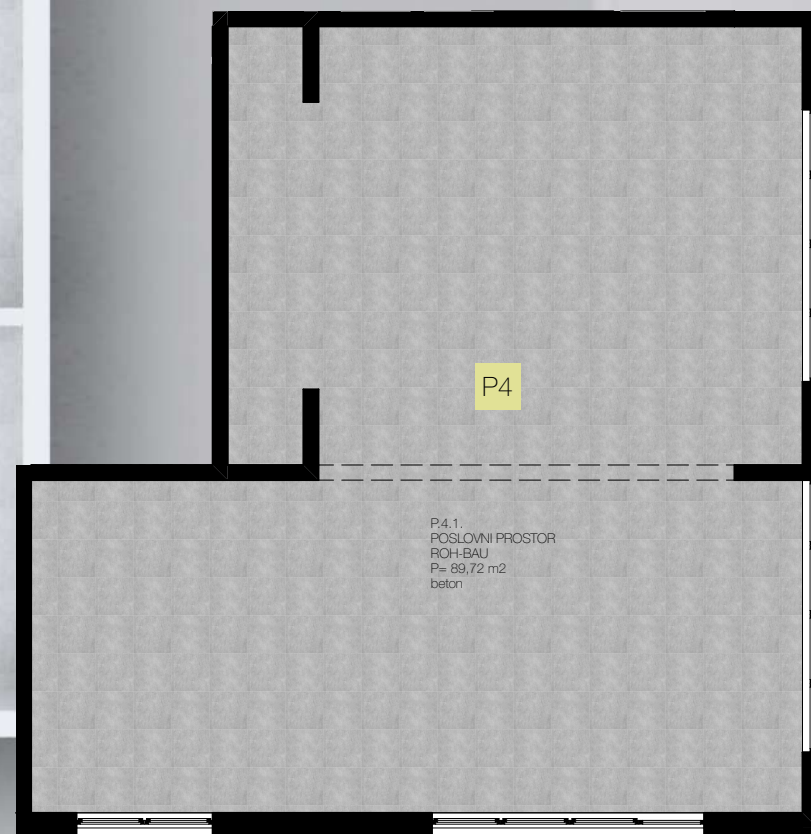
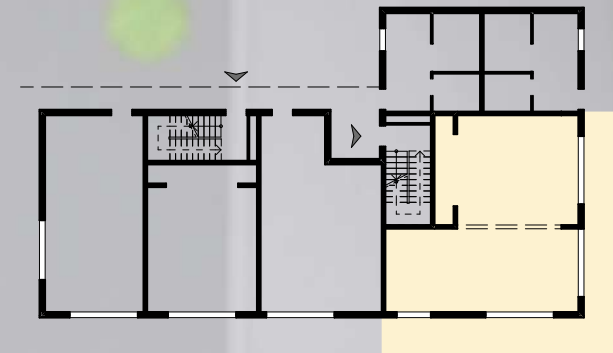
M1:100





P.4.1. POSLOVNI PROSTOR - ROH-BAU	89,72m ²	beton
P.4.2. NATKRIVENA TERASA	49,36x0,50	keramika
	= 24,68 m ²	

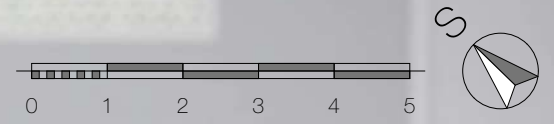
POSLOVNI PROSTOR P4	114,40 m²
----------------------------	-----------------------------



P4.1.
POSLOVNI PROSTOR
ROH-BAU
P= 89,72 m²
beton

P4.2.
NATKRIVENA TERASA
P= 49,36 m²
keramika

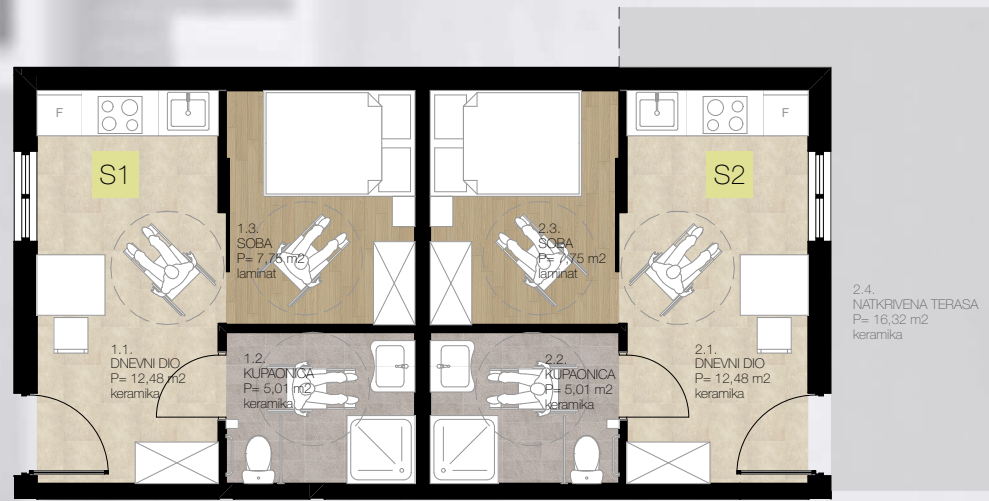
M1:100



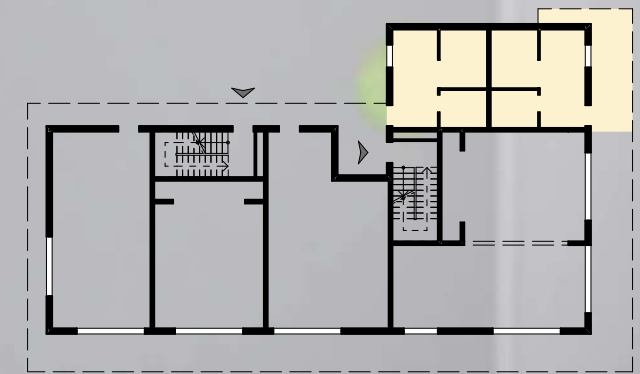
1.1. DNEVNI DIO	12,48 m ²	keramika
1.2. KUPAONICA	5,01 m ²	keramika
1.3. SOBA	7,75 m ²	laminat
STAN S1	25,24 m²	

2.1. DNEVNI DIO	12,48 m ²	keramika
2.2. KUPAONICA	5,01 m ²	keramika
2.3. SOBA	7,75 m ²	laminat
2.2. NATKRIVENA TERASA	16,32x0,50	keramika
	= 8,16 m ²	

STAN S2 **33,40 m²**



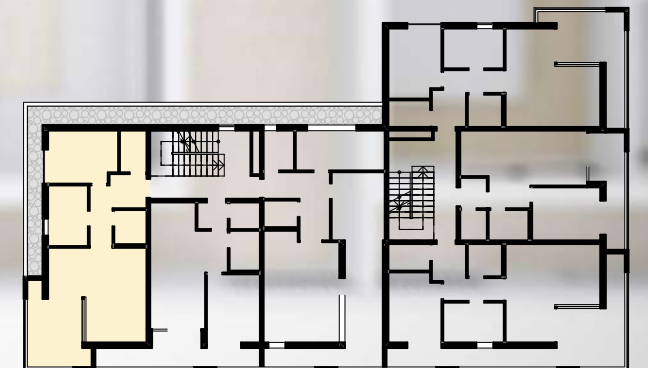
M1:100





3.1. HODNIK	7,29 m ²	keramika
3.2. KUHINJA I BLAGOVAONICA	13,00 m ²	keramika
3.3. DNEVNI BORAVAK	8,00 m ²	keramika
3.4. SOBA	10,30 m ²	laminat
3.5. SOBA	6,72 m ²	laminat
3.6. KUPAONICA	3,06 m ²	keramika
3.7. UTILITY	3,08 m ²	keramika
3.8. TERASA	11,28x0,75 = 8,46 m ²	keramika

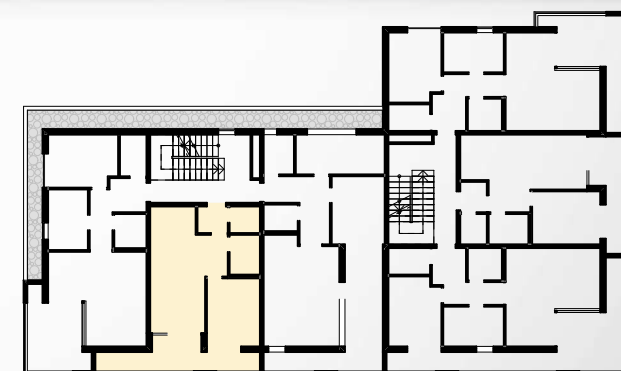
STAN S3 59,91 m²





4.1. HODNIK	2,24 m ²	keramika
4.2. KUHINJA	3,60 m ²	keramika
4.3. BLAGOVAONICA	9,20 m ²	keramika
4.4. DNEVNI BORAVAK	8,41 m ²	keramika
4.5. SOBA	10,08 m ²	laminat
4.6. KUPAONICA	3,36 m ²	keramika
4.7. UTILITY	2,24 m ²	keramika
4.8. TERASA	10,78x0,75 =	keramika
	8,09 m ²	

STAN S4 47,22 m²



M1:100



5.1. HODNIK	8,54 m ²	keramika
5.2. KUHINJA I BLAGOVAONICA	12,28 m ²	keramika
5.3. DNEVNI BORAVAK	9,95 m ²	keramika
5.4. SOBA	10,88 m ²	laminat
5.5. SOBA	9,87 m ²	laminat
5.6. KUPAONICA	3,36 m ²	keramika
5.7. UTILITY	2,52 m ²	keramika
5.8. TERASA	17,10x0,75 = 12,83 m ²	keramika

STAN S5 70,23 m²

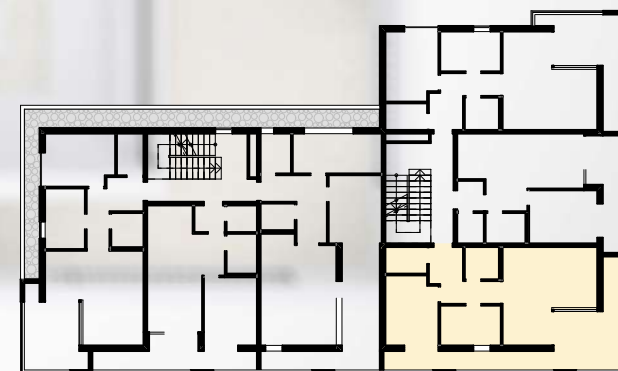


M1:100



6.1. HODNIK	7,29 m ²	keramika
6.2. KUHINJA I BLAGOVAONICA	13,00 m ²	keramika
6.3. DNEVNI BORAVAK	8,00 m ²	keramika
6.4. SOBA	10,30 m ²	laminat
6.5. SOBA	6,72 m ²	laminat
6.6. KUPAONICA	3,06 m ²	keramika
6.7. UTILITY	3,08 m ²	keramika
6.8. TERASA	22,60x0,75 = 16,95 m ²	keramika

STAN S6 **68,40 m²**

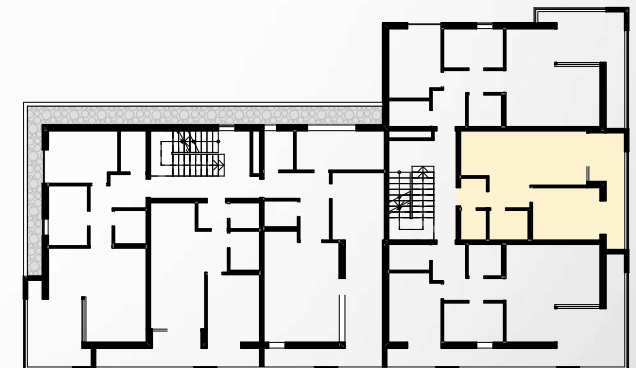


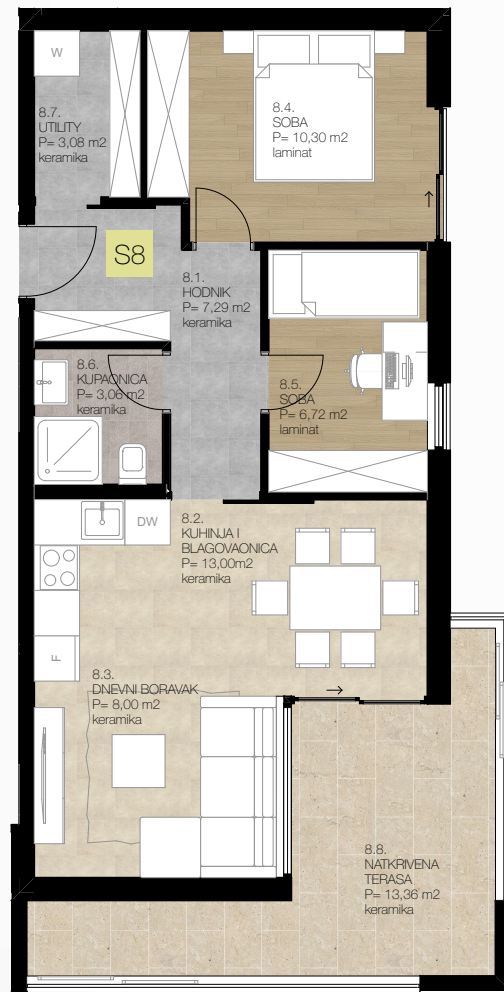
M1:100



7.1. HODNIK	2,24 m2	keramika
7.2. KUHINJA	3,60 m2	keramika
7.3. BLAGOVAONICA	9,20 m2	keramika
7.4. DNEVNI BORAVAK	8,41 m2	keramika
7.5. SOBA	10,08 m2	laminat
7.6. KUPAONICA	3,36 m2	keramika
7.7. UTILITY	2,24 m2	keramika
7.8. TERASA	8,28x0,75 = 6,21 m2	keramika

STAN S7 45,34 m2





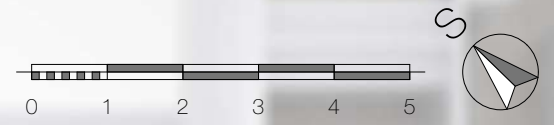
M1:100



8.1. HODNIK	7,29 m ²	keramika
8.2. KUHINJA I BLAGOVAONICA	13,00 m ²	keramika
8.3. DNEVNI BORAVAK	8,00 m ²	keramika
8.4. SOBA	10,30 m ²	laminat
8.5. SOBA	6,72 m ²	laminat
8.6. KUPAONICA	3,06 m ²	keramika
8.7. UTILITY	3,08 m ²	keramika
8.8. TERASA	13,36x0,75 = 10,02 m ²	keramika

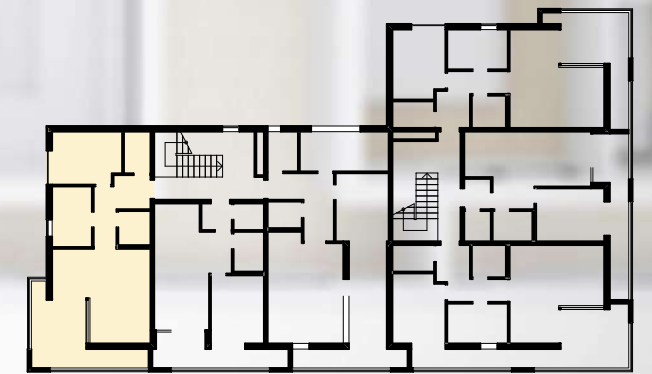
STAN S8 **61,47 m²**





9.1. HODNIK	7,29 m ²	keramika
9.2. KUHINJA I BLAGOVAONICA	13,00 m ²	keramika
9.3. DNEVNI BORAVAK	8,00 m ²	keramika
9.4. SOBA	10,30 m ²	laminat
9.5. SOBA	6,72 m ²	laminat
9.6. KUPAONICA	3,06 m ²	keramika
9.7. UTILITY	3,08 m ²	keramika
9.8. TERASA	14,08x0,75 =	keramika
	10,56 m ²	

STAN S9 62,01 m²



M1:100

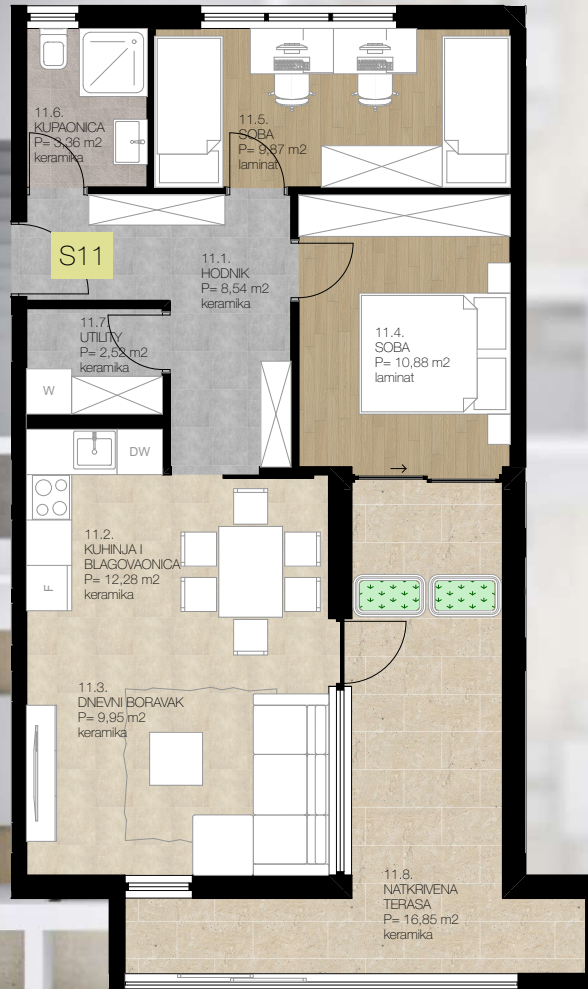
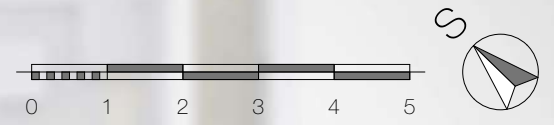


10.1. HODNIK	2,24 m ²	keramika
10.2. KUHINJA	3,60 m ²	keramika
10.3.	9,20 m ²	keramika
10.4. DNEVNI BORAVAK	8,41 m ²	keramika
10.5. SOBA	10,08 m ²	laminat
10.6. KUPAONICA	3,36 m ²	keramika
10.7. UTILITY	2,24 m ²	keramika
10.8. TERASA	9,33x0,75 =	keramika
	6,99 m ²	

STAN S10 46,12 m²

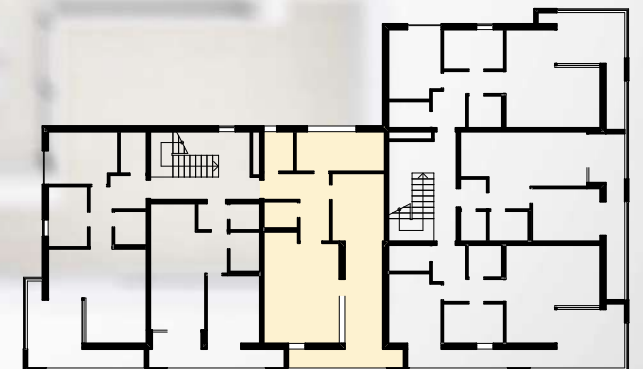
M1:100





11.1. HODNIK	8,54 m ²	keramika
11.2. KUHINJA I BLAGOVAONICA	12,28 m ²	keramika
11.3. DNEVNI BORAVAK	9,95 m ²	keramika
11.4. SOBA	10,88 m ²	laminat
11.5. SOBA	9,87 m ²	laminat
11.6. KUPAONICA	3,36 m ²	keramika
11.7. UTILITY	2,52 m ²	keramika
11.8. TERASA	16,85x0,75 =	keramika
	12,64 m ²	

STAN S11 70,04 m²

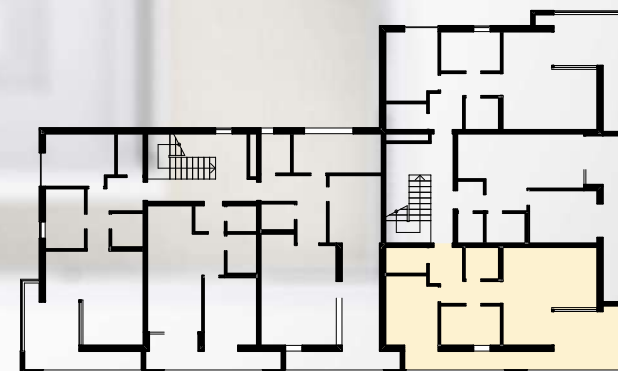


M1:100



12.1. HODNIK	7,29 m ²	keramika
12.2. KUHNJA I BLAGOVAONICA	13,00 m ²	keramika
12.3. DNEVNI BORAVAK	8,00 m ²	keramika
12.4. SOBA	10,30 m ²	laminat
12.5. SOBA	6,72 m ²	laminat
12.6. KUPAONICA	3,06 m ²	keramika
12.7. UTILITY	3,08 m ²	keramika
12.8. TERASA	18,90x0,75 =	keramika
	14,18 m ²	

STAN S12 65,63 m²

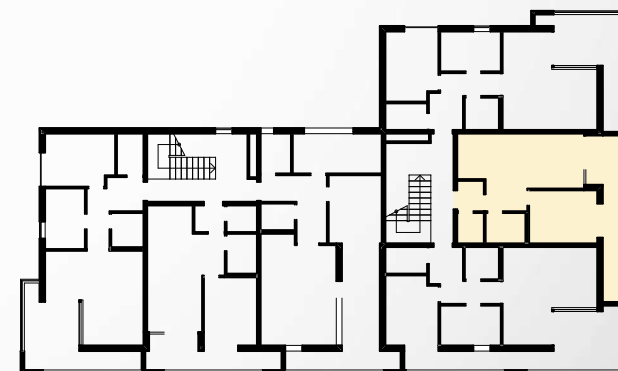


M1:100



13.1. HODNIK	2,24 m ²	keramika
13.2. KUHINJA	3,60 m ²	keramika
13.3.	9,20 m ²	keramika
13.4. DNEVNI BORAVAK	8,41 m ²	keramika
13.5. SOBA	10,08 m ²	laminat
13.6. KUPAONICA	3,36 m ²	keramika
13.7. UTILITY	2,24 m ²	keramika
13.8. TERASA	10,88x0,75 = 8,16 m ²	keramika

STAN S13 47,29 m²

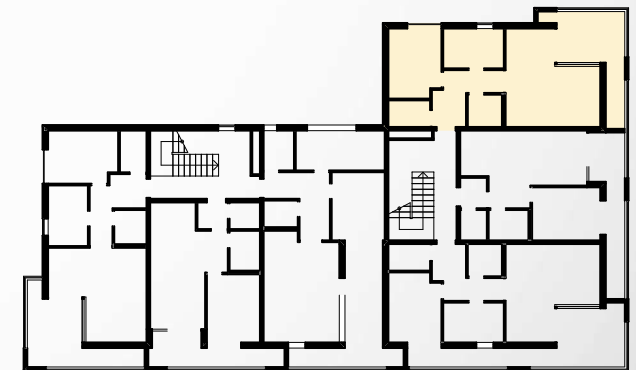


M1:100



14.1. HODNIK	7,29 m ²	keramika
14.2. KUHINJA I BLAGOVAONICA	13,00 m ²	keramika
14.3. DNEVNI BORAVAK	8,00 m ²	keramika
14.4. SOBA	10,30 m ²	laminat
14.5. SOBA	6,72 m ²	laminat
14.6. KUPAONICA	3,06 m ²	keramika
14.7. UTILITY	3,08 m ²	keramika
14.8. TERASA	13,37x0,75 =	keramika
	10,02 m ²	

STAN S14 61,47 m²



M1:100